

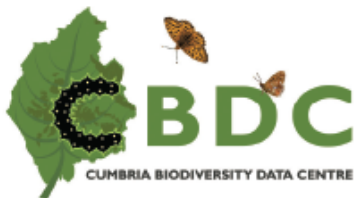
The Westmorland Dales Landscape Partnership

Geology Project 1.1 Revealing the Foundations

Sylvia Woodhead, Cumbria GeoConservation for CBDC Feb 24



Cumbria
Wildlife Trust



Made possible with

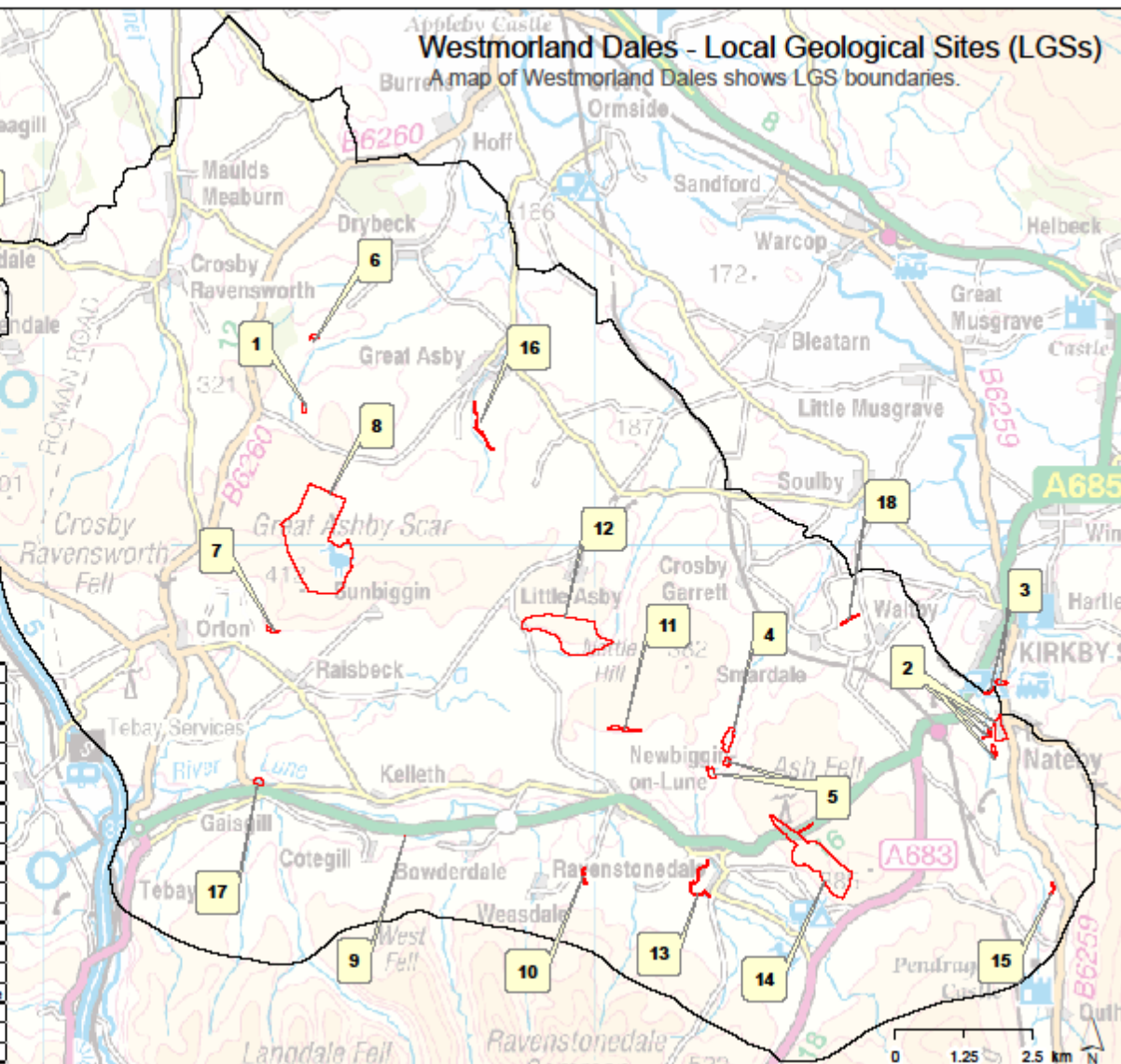
Heritage
Fund



Westmorland Dales - Local Geological Sites (LGSs)

A map of Westmorland Dales shows LGS boundaries.

Number	Site Name
1	Scale Beck
2	Nateby West
3	Shenkrith Park
4	Smardale Gill Limestone Quarry
5	Smardale Bridge
6	North Gaythorne Quarry
7	Knott
8	Great Asby Scar
9	Flakebridge
10	Pinskey Gill
11	Bents
12	Little Asby Scar & Potts Valley
13	Stone Gill
14	Ash Fell Edge
15	Janny Wood
16	Pate Hole Mouth and Great Kettle
17	Marl Crag
18	Waltby Cutting
19	Trainlegs Thunderstone





Silurian Windermere Group rocks at Lune's Bridge, south of Tebay



The Westmorland Dales, looking south from Asby limestone pavement, over the marl lake of Sunbiggin Tarn to the older rocks of the Howgill Fells



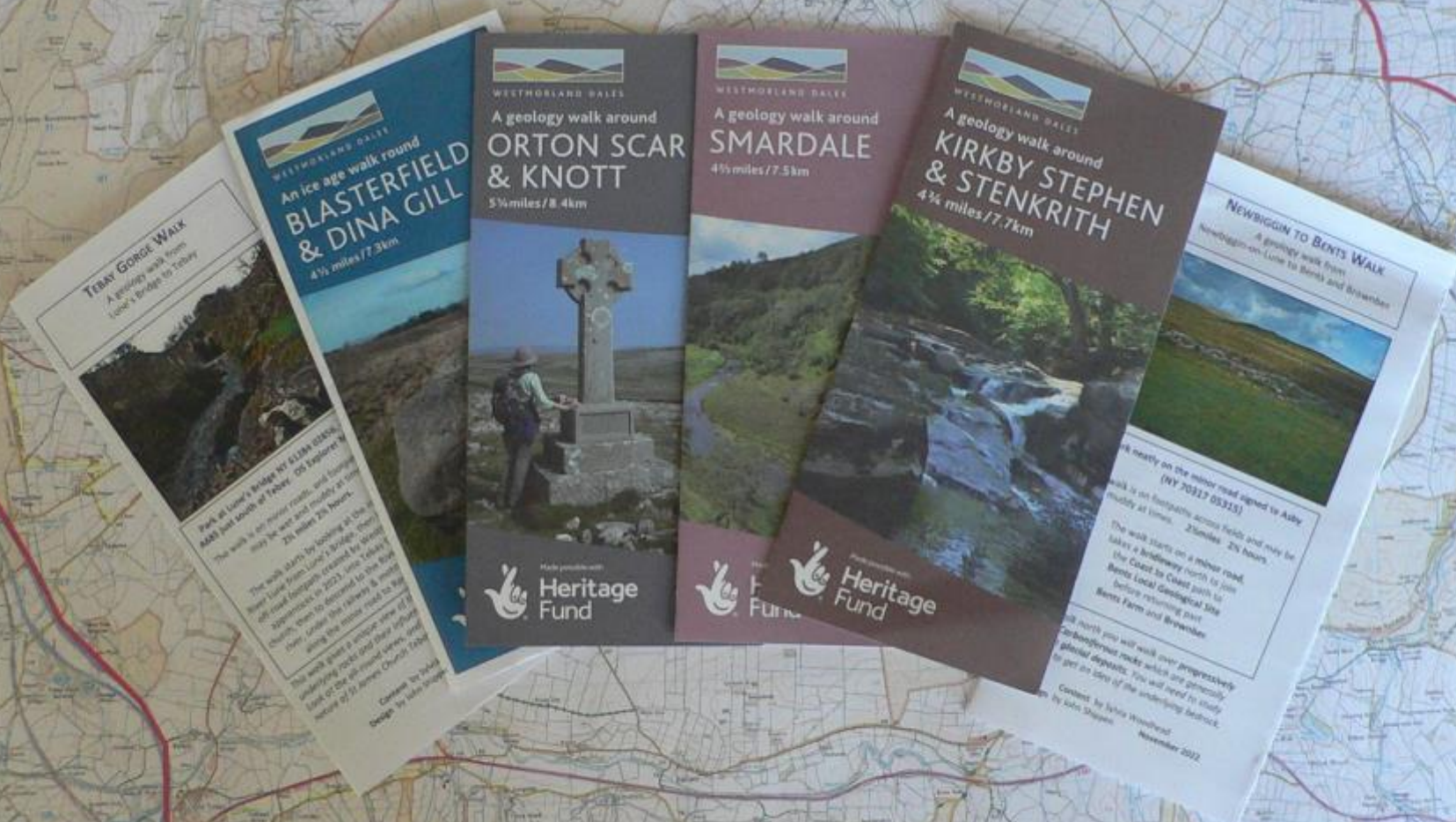
Carboniferous Ashfell Sandstone at Bents on the C2C



Permian Brockram in the River Eden at Stenkrith

Geological interpretation boards at Smardale





www.cumbriageoconservation.org.uk

Revealing the foundations

The geology and landscape of the Westmorland Dales

Revealing the Foundations

Elizabeth Pickett

published by Cumbria GeoConservation



Revealing the Foundations, a new publication by Cumbria GeoConservation, tells the story of the geology and landscape of this fantastic area. The Westmorland Dales forms the north-west corner of the Yorkshire Dales National Park and is a beautiful part of east Cumbria. The area has a rich and varied geological heritage, recording over 400 million years of Earth history.

At its heart is dramatic limestone countryside including Great Asby Scar National Nature Reserve, but there's more to see, from the slaty rocks of the Howgills to the red sandstone of the Eden Valley, and many glacial and recent landforms. This book, beautifully written and illustrated by Elizabeth Pickett, is a wonderful introduction to the area. It spans 450 million years of geological history and describes how the landscape that we see today has been shaped by ice and water. The book also recommends places to visit.

It has been produced as part of the Westmorland Dales Landscape Partnership Scheme, grant funded by the National Lottery Heritage Fund, with additional grant support from the Yorkshire Dales National Park Authority's Sustainable Development Fund.

Key Features include

A geological map of the region and geological cross section

Illustrations of the Earth in the past

Hand drawn 3D block diagrams

Superb photographs

Easy to understand explanations

Present day examples



Contents

Beginnings
Granite and old red rocks
Carboniferous world
Limestone country
Desert basin
Missing millions
Frozen land
After the Ice Age
The landscape today
Places to visit
Further information



Format ISBN: 978-1-3999-6777-8

Width: 21 cm Height: 20 cm Pages: 36

Published: 11/10/2023 Binding: paperback £10.00

Proceeds from the sale of this book will support
the work of Cumbria GeoConservation

Available from

<https://www.cumbriageoconservation.org.uk>