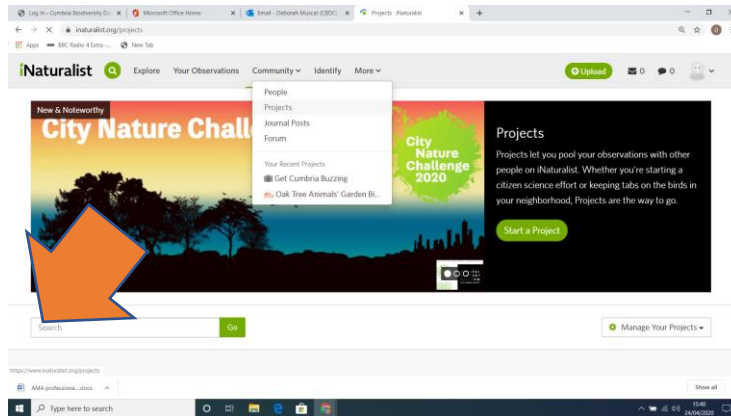
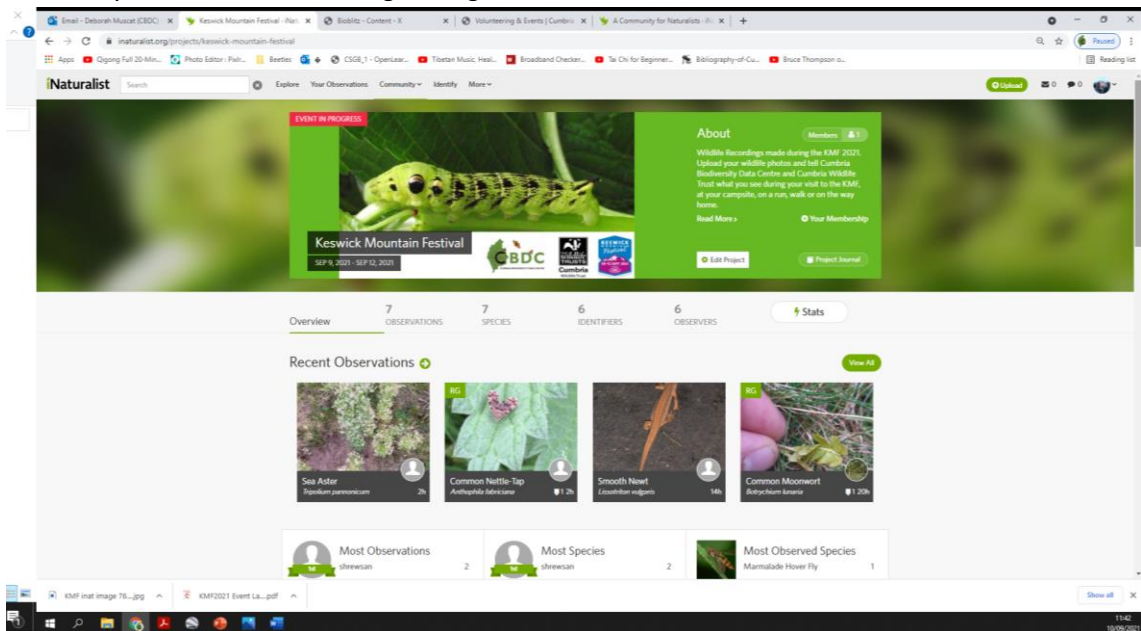


# STEP 1. JOIN THE INATURALIST KESWICK MOUNTAIN FESTIVAL PROJECT

1. Go to iNaturalist <https://www.inaturalist.org/>
2. Go to top right hand corner and Sign Up.
3. When you have done Sign In
4. Click **Community** on the menu bar
5. Select **Projects**
6. Type Keswick Mountain Festival in the search box at the bottom Click Go



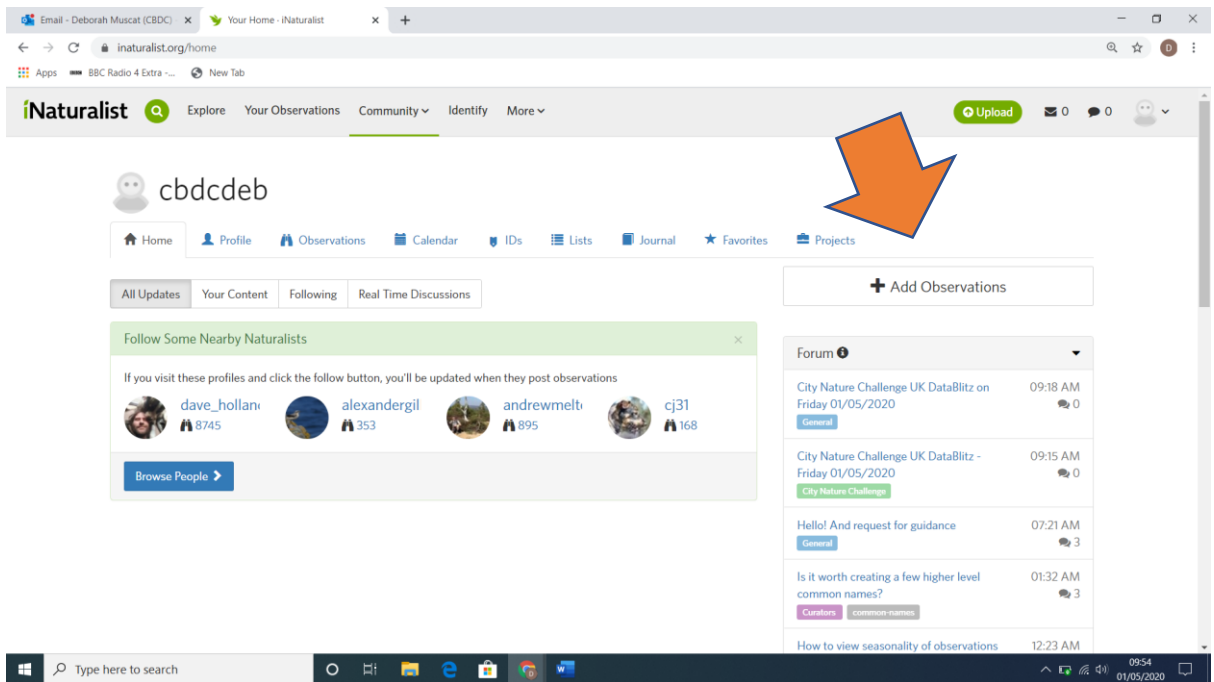
7. It should come up
8. There is a join button on the top right hand corner.
9. And then you should see something looking list this.



This page gives an overview of the records so far for the project.

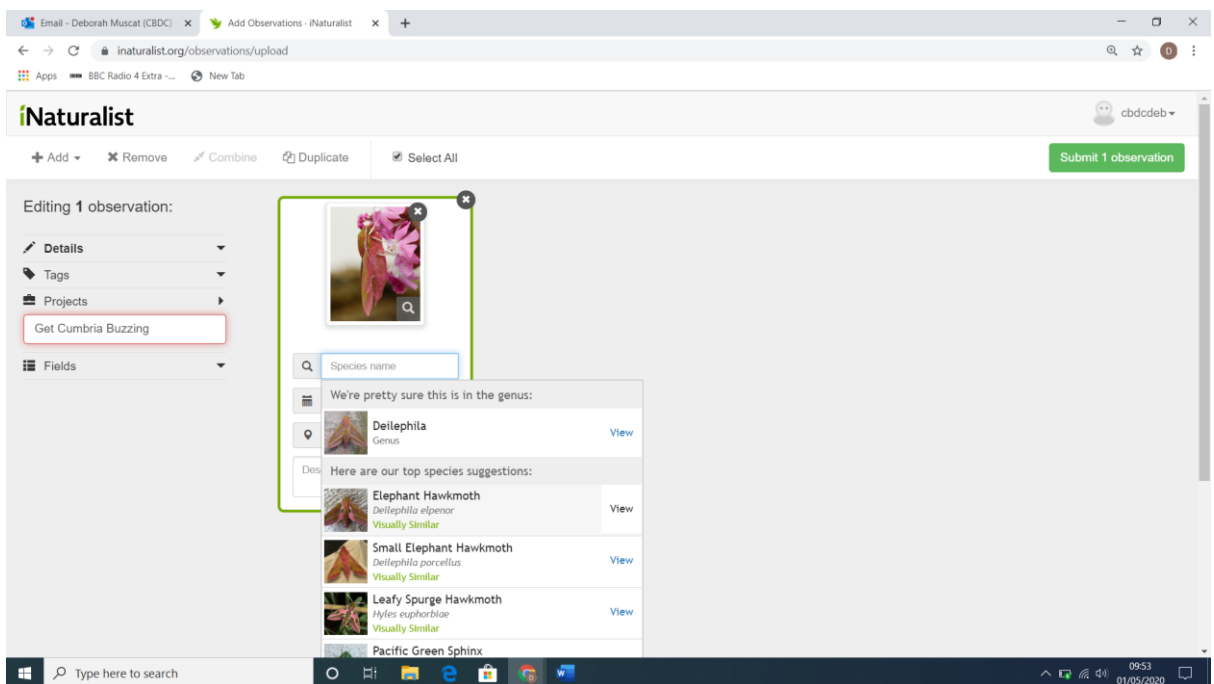
## STEP 2. ADD YOUR WILDLIFE PHOTOGRAPHS AND RECORDS

1. Return to your Home page and click Add observation



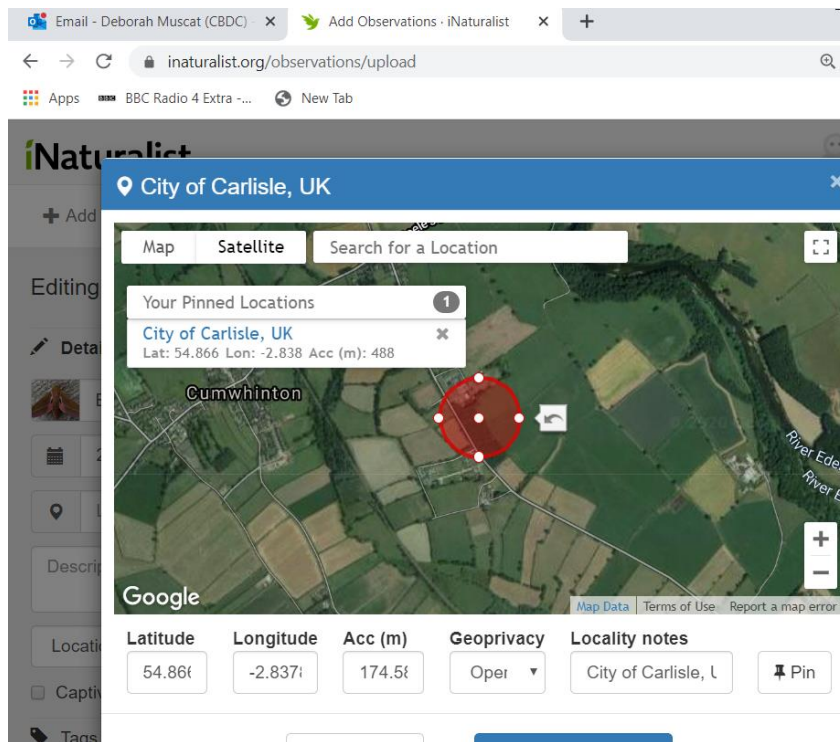
2. Upload your photograph
3. When your picture is uploaded you need to fill in some extra information – the record details.

**Species name** – fill it in if you know it or click the box and wait for a suggestion. Click the one you think is best.



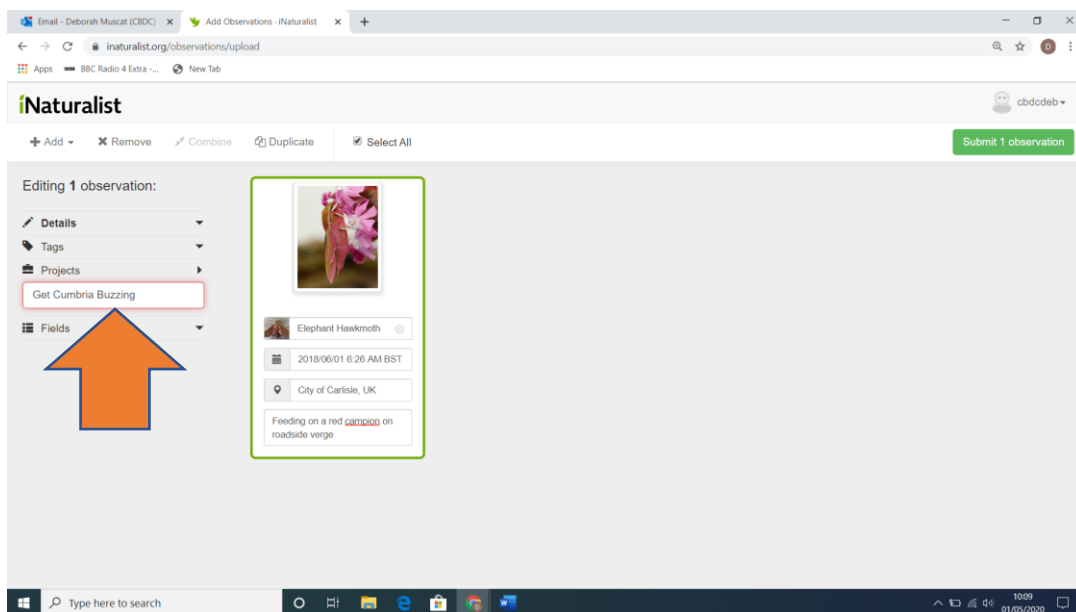
**Date** this will automatically update as the date details attached to the image.

**Location** pinpoint the location of the species. If it is a place you are going to regularly record, ie your garden then use the pin button on the bottom right hand corner. This will make it quicker to add records at the same place.



**Description** – you can write a note eg “caught by cat”

4. The final box to complete is the Project Box. Type in Keswick Mountain Festival.



5. Now submit your observation by clicking the green box in the top right hand corner.

**THANK YOU.**

We will let everyone know the results after the Festival (when we have full access to the internet!)