

Priority Habitats in Cumbria

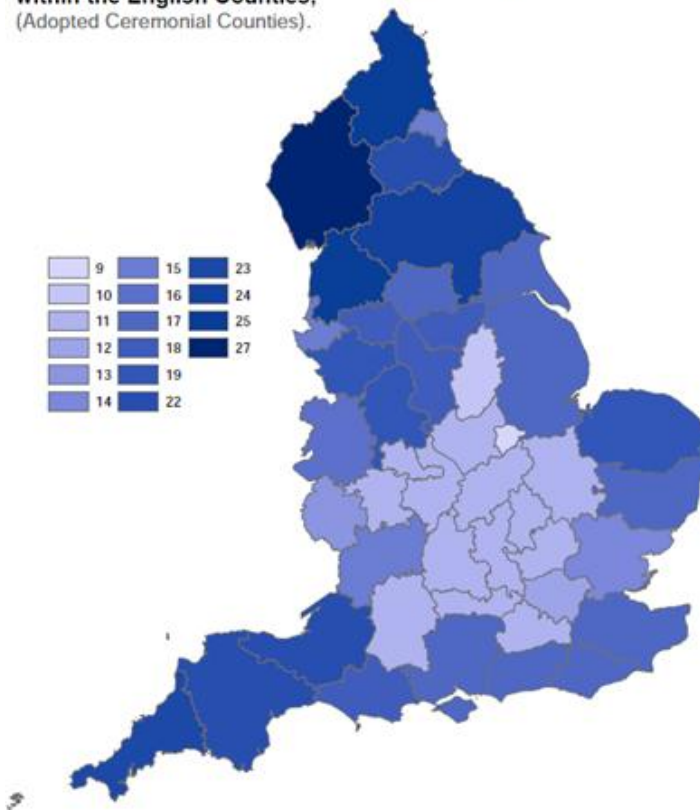


Dr El-Moustafa Eweda and Dr Teresa Frost
Cumbria Biodiversity Data Centre, Tullie House Museum
August 2014

According to Natural England's *Priority Habitats' Inventory (Single Habitats' Layer) for England v1.1* Cumbria has the most diverse range of habitats of any English county and is the only county with all 24 different habitats represented. These habitats are the mapped terrestrial habitats from Natural Environment and Rural Communities (NERC) Act 2006 Section 41: Habitats of Principal Importance in England. (Table 1, Figure 1).

A greater proportion of Cumbria is priority habitat than any other English county (Table 2, Figure 2).

Number of the UK Priority Habitats Inventory (PHI) within the English Counties, (Adopted Ceremonial Counties).



Cumbria is particularly significant in the context of England for the priority habitat Mountain Heath and Willow scrub, holding 84% of the total area of the habitat (Table 2). The county is also very important for Limestone Pavement (59%); Lowland Raised Bog (45%); Upland Flushes (44%); Upland Hay Meadows (25%); Upland Calcareous Grassland (23%); Saltmarsh (22%); and Blanket Bog (22%).

Figure 1 - Map of number of priority habitats by county

Table 1: Priority Habitats in Cumbria

PHI - Natural England Priority Habitats' Inventory (Single Habitats' Layer) for England v1.1	Percentage of England habitat area in Cumbria
Mountain Heath & Willow Scrub	84%
Limestone Pavements	59%
Lowland Raised Bog	45%
Upland Flushes, Fens & Swamps	44%
Upland Hay Meadows	25%
Upland Calcareous Grassland	23%
Saltmarsh	22%
Blanket Bog	22%
Upland Heathland	15%
Coastal Sand Dunes	15%
Saline Lagoons	12%
Coastal & Floodplain Grazing Marsh	9.4%
Purple Moor Grass & Rush Pastures	8.0%
Lowland Fens	7.4%
Deciduous Woodland	3.2%
Lowland Dry Acid Grassland	2.6%
Maritime Cliff & Slope	2.5%
Lowland Calcareous Grassland	1.9%
Mudflats	1.6%
Lowland Heathland	1.6%
Lowland Meadows	1.4%
Traditional Orchards	0.9%
Reedbeds	0.6%
Coastal Vegetated Shingle	0.4%
Other Habitats*	
Fragmented Heath	45.1%
Grass Moorland	1.2%
Good Quality Semi-Improved Grassland	3.2%

* The Single Habitats layer contains the habitats Fragmented Heath, Grass Moorland and Good Quality Semi-improved grassland which are not Priority Habitats.

Table 2: Number of Priority Habitats per county

County	No. Priority habitats (inc non-Priority habitats in NE layer*)	Main PHI* AREA (km	Main PHI* as percentage of county area	Main and Additional PHI** as percentage of county area
Cumbria	24 (27)	1878	26%	37%
Lancashire	22 (25)	634	19%	29%
Northumberland	22 (25)	1059	21%	25%
North Yorkshire	21 (24)	1997	23%	27%
Cornwall	20 (23)	461	13%	15%
Durham	20 (22)	700	26%	28%
Devon	19 (22)	1146	17%	20%
Somerset	19 (22)	1021	23%	26%
Norfolk	18 (19)	686	12%	19%
Cheshire	17 (19)	200	8.4%	12%
Dorset	17 (18)	405	15%	20%
East Riding of Yorkshire	16 (17)	177	6.9%	11%
East Sussex	16 (17)	459	25%	31%
Hampshire	16 (17)	865	22%	29%
Isle of Wight	16 (17)	72	18%	23%
Kent	16 (17)	658	17%	23%
Lincolnshire	16 (17)	381	5.3%	11%
Staffordshire	16 (19)	283	10%	13%
Suffolk	16 (17)	392	10%	15%
West Sussex	16 (17)	435	22%	28%
Derbyshire	15 (18)	481	18%	21%
Greater Manchester	15 (18)	154	12%	17%
South Yorkshire	15 (18)	294	19%	25%
Gloucestershire	14 (15)	496	15%	20%
Merseyside	14 (15)	117	14%	28%
Tyne and Wear	14 (15)	31	5.6%	9.4%
West Yorkshire	14 (17)	317	16%	19%
Essex	13 (14)	403	10%	19%
Shropshire	13 (16)	271	7.8%	10%
Greater London	11 (12)	137	8.6%	14%
Herefordshire	11 (13)	213	10%	12%
Bedfordshire	10 (11)	93	7.5%	12%
Berkshire	10 (11)	175	14%	19%
Buckinghamshire	10 (11)	181	10%	13%
Cambridgeshire	10 (11)	206	6.1%	10%
Hertfordshire	10 (11)	160	10%	14%
Leicestershire	10 (11)	102	4.7%	6.3%
Northamptonshire	10 (11)	136	5.8%	8.3%

County	No. Priority habitats (inc non-Priority habitats in NE layer*)	Main PHI* AREA (km	Main PHI* as percentage of county area	Main and Additional PHI** as percentage of county area
Oxfordshire	10 (11)	243	9.3%	12%
Surrey	10 (11)	347	21%	27%
Warwickshire	10 (11)	112	5.7%	7.6%
West Midlands	10 (11)	51	5.7%	11%
Wiltshire	10 (11)	537	15%	21%
Worcestershire	10 (11)	165	9.5%	12%
Nottinghamshire	9 (10)	138	6.4%	10%
Rutland	8 (9)	21	5.3%	7.4%

* The Single Habitats layer contains the habitats Fragmented Heath, Grass Moorland and Good Quality Semi-improved grassland which are not Priority Habitats. These are included in the number of habitats in brackets area of Main PHI and Main PHI as % of county area.

** Some polygons in the Single Habitats layer do not have a priority habitat as the main habitat for the polygon, but recognise additional priority habitats are present. This area is therefore a theoretical maximum.

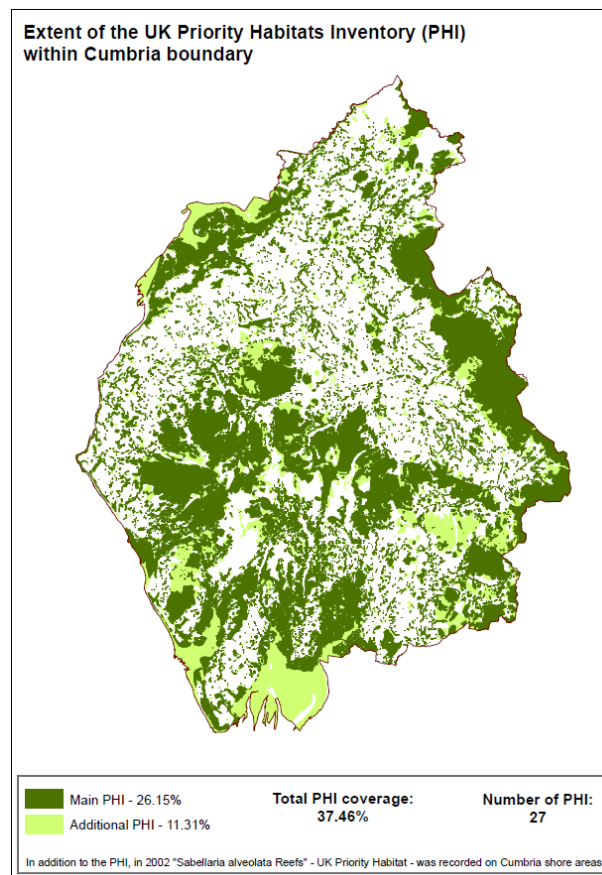


Figure 2 Map of PHI habitat extent in Cumbria