

Index to species of Coleoptera recorded in the Carlisle Naturalist Volumes 1 - 20, (1993 – 2012)

No. 10 Issue 1

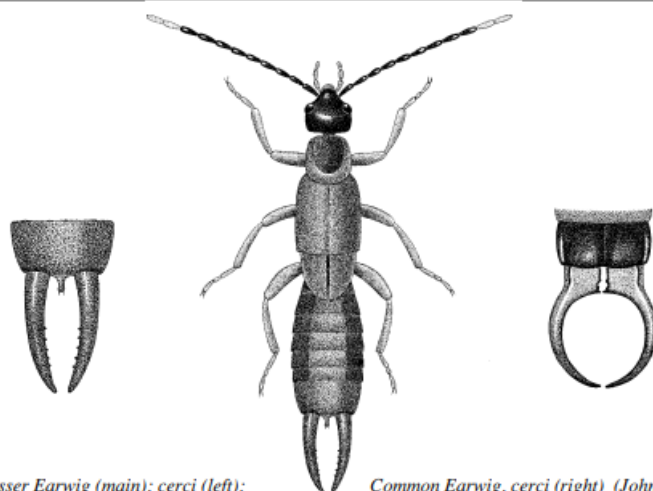
December 2024

The CARLISLE NATURALIST

Volume 15 Number 1

Spring 2007

Published twice-yearly (Spring/Autumn) by Carlisle Natural History Society



Lesser Earwig (main); cerci (left); Common Earwig, cerci (right) (John Read)

Society Announcements – see end covers

Report on Field Meeting

3rd February: North Solway and Loch Ken – Dorothy Iveson 1

Recent Reports – Geoff Naylor 2

Notes and Records

Autumn Hawkbit (*Leontodon autumnalis* ssp. *pratensis* (Hornem.) Gremli.) in the northern Pennines – Roderick Corner 4

A new site for the lady's-mantle *Alchemilla glomerulans* Buser – Jeremy Roberts, Roderick Corner, & Linda Robinson 6

The Scarlet Elf-cup (*Sarcoscypha coccinea* (Jacq.: Fr.) Lambotte) and earthstar fungi (*Geastrum* sp.) at Fishgarth Wood, Armathwaite – David Clarke 9

The Lesser Earwig (*Labia minor* Linnaeus) (Dermaptera, Labiidae) in West Cumbria – R.W.J. Read 10

Further records of the Thick-legged Flower-beetle *Oedemera femoralis* (Olivier) (Coleoptera: Oedemeridae) in north-west England – Jim Thomas 12

The ladybird-beetle *Scymnus schmidtii* Fursch (Coleoptera, Coccinellidae) in Cumbria – Jim Thomas 13

The rare soldier-beetle *Cantharis fusca* L., new to Cumbria – David Atty 14

Trichiusa immigrata Lohse and other noteworthy beetles recently found in Cumbria – David Atty 15

Book Review: *Galloway and the Borders* by Derek Ratcliffe – Mark Pollitt . . . 18

Cumbria Biodiversity Data Centre Occasional Publication



Index to Coleoptera recorded in The Carlisle Naturalist, volumes 1-20 (1993 – 2012)

R.W.J. Read

43 Holly Terrace, Hensingham, Whitehaven, Cumbria, CA28 8RF.

Email - jread@uwclub.net

Abstract: Index to species of coleoptera published in The Carlisle Naturalist, volumes 1 – 20, 1993 – 2012.

Keywords: The Carlisle Naturalist, index, coleoptera.

Recommended citation: Read, R. W. J. (2024) Index to the coleoptera recorded in the Carlisle Naturalist volumes 1 – 20, 1993 – 2012. Cumbria Biodiversity Data Centre Occasional Publications No. 10 Issue 1: 1-11.

Contents

Introduction	1
The Carlisle Naturalist volumes 1-20 (1993 – 2012)	2
Index of Contributors	10
Acknowledgements	10

Introduction

The Carlisle Naturalist was first published by the Carlisle Natural History Society in the year of its centenary in June 1993 and ran continuously until August 2012 when it was superseded by the *Lakeland Naturalist* in 2013. In all 20 Volumes of 39 parts were produced twice yearly in spring and autumn. Only part one of volume 1 was published in 1993. This index includes all the species of coleoptera recorded in the journal, and it also includes those species that have been referred to indirectly. In some cases certain species have been recorded under common names only and these have been given the appropriate scientific name in the index. Also the same species is indexed under a different scientific name, ie. *Coccinella 7-punctata* is also given as *Coccinella septempunctata*. The generic name and specific name for each species listed in the index is followed by the volume number, which is in bold type, and the part number is in parentheses. An index of contributors is also included.

The Carlisle Naturalist volumes 1-20 (1993 – 2012)

- Acalles roboris* **3**(1): 6
Acilius canaliculatus **17**(2): 29,30
Acilius sulcatus **17**(2): 29,30
Acrotrichus montadoni **19**(2): 56
Acrulia inflata **18**(1): 19
Adalia 10-punctata **13**(2): 7; **14**(1): 10; **16**(1): 19
Adalia 2-punctata **16**(1): 19
Adalia decempunctata **12**(2): 39
Agabus bipustulatus **17**(2): 29,30
Agabus melanarius **17**(1):12
Agabus sturmii **17**(2): 30
Agathidium seminulum **11**(1): 22
Agonum albipes **8**(1): 16
Agonum thoreyi **11**(1): 10
Agriotes pallidulus **16**(1): 21
Aleochara brevipennis **18**(1): 20
Aleochara moerens **18**(1): 20
Aloconota cambrica **8**(1): 16
Aloconota insecta **8**(1): 16
Aloconota sulcifrons **8**(1): 16
Amara fulva **8**(1): 16,18
Amara praetermissa **5**(1) :8
Amidobia talpa **19**(2) :56
Ampedus balteatus **11**(1):22
Ampedus pomorum **15**(1) :16
Anacena globulus **17**(2) :30
Anacena limbata **15**(1): 16; **17**(2): 30
Anacena lutescens **15**(1): 16
Anatis ocellata **5**(2): 27,42; **12**(2): 39; **13**(2): 7
Anisosticta 19-punctata **14**(1): 9,10-11
Anisotoma orbicularis **18**(1): 19
Anobium punctatum **11**(2): 22
Anthicus bimaculatus **4**(1): 9
Aphidecta oblitterata **5**(2): 42
Aphodius plagiatus **18**(1): 22
Aphodius porcus **17**(1): 13
Apion flavipes **11**(1): 11
Apion ononicola **7**(1): 6
Apion pallipes **3**(1): 5
Apion viciae **18**(2): 35
Apthona melanocholica **3**(1): 5
Aromia moschata **18**(1): 23
Asemum striatum **11**(1): 22
Atheta (Dimetrota) setigera **18**(1): 20
Atheta (Microdota) amicula **18**(1): 20
Atheta (Philhygra) hygrobica **18**(1): 20
Atheta (Traumoecia) picipes **18**(1): 20
Atheta obfuscata **8**(1): 16,19
Atheta pilicornis **18**(1): 20
Athous haemorrhoidalis **16**(1): 19; **16**(1): 21

- Balanobius pyrrhoceras* **16**(1): 20
- Barypeithes sulcifrons* **15**(1): 17
- Bembidion andreae* **8**(1): 16
- Bembidion assimile* **14**(1): 10
- Bembidion atrocaeruleum* **8**(1): 16
- Bembidion decorum* **8**(1): 16
- Bembidion dentellum* **19**(1): 8
- Bembidion fluviatile* **8**(1): 15,16
- Bembidion litorale* **8**(1): 15,16
- Bembidion monticola* **8**(1): 15,16
- Bembidion normannum* **20**(1): 5
- Bembidion punctulatum* **8**(1): 16
- Bembidion schuppelii* **19**(1): 8
- Bembidion stomoides* **7**(2): 13; **8**(1): 16; **19**(1): 8
- Bembidion tetracolum* **8**(1): 16
- Bembidion tibiale* **8**(1): 16
- Biblioporus bicolor* **11**(1): 22
- Brachygluta heamatica* **18**(1): 22
- Brachypterus glaber* **2**(1): 4
- Bruchidius villosus* **12**(2): 49; **13**(1): 7-8; **17**(1): 14
- Byctiscus betulae* **14**(1): 12
- Calathus cinctus* **7**(1): 6
- Calathus melanocephalus* **7**(1): 6
- Calathus mollis* **7**(1): 6
- Calvia quattuordecimguttata* **12**(2): 39
- Cantharis fusca* **15**(1): 14-15
- Cantharis lateralis* **16**(1): 21
- Cantharis nigricans* **16**(1): 19
- Cantharis obscura* **14**(1): 11
- Carabus nitens* **3**(2): 31
- Carabus problematicus* **19**(2): 44
- Carabus violaceus* **19**(2): 44
- Cassida prasina* **14**(1): 11
- Cassida viridis* **2**(1): 3
- Cephennium gallicum* **17**(1): 13
- Cerylon fagi* **11**(1): 18,22
- Cerylon ferrugineum* **11**(1): 22
- Cetonia aurata* **11**(2): 33; **18**(2): 29
- Ceuthorhynchidius dawsoni* **3**(1): 5
- Ceutorhynchus mixtus* **15**(1): 17
- Chaetocnema sahlbergi* **3**(1): 9
- Chilocoris bipustulatus* **12**(2): 39
- Chilocoris renipustulatus* **12**(2): 39
- Chlaenius nigricornis* **15**(2): 29-30; **18**(1): 18
- Choleva oblonga* **18**(1): 19
- Chrysolina americana* **19**(1): 9
- Chrysolina varians* **15**(2): 24
- Chrysomela aenea* **7**(1): 9
- Cicindela campestris* **5**(2): 27; **7**(1): 5; **15**(1): 3; **16**(1): 21; **17**(2): 33; **19**(2): 44
- Cicindela hybrida* **17**(1): 11
- Cis vestitus* **18**(1): 23

- Clivina collaris* **8**(1):16
- Clytra quadripunctata* **6**(2): 2; **9**(2): 22; **10**(2): 20; **16**(1): 20; **18**(2): 30; **19**(2): (colour plate 9); **19**(2): 56
- Clytus arietis* **7**(2): 14; **16**(1): 19
- Coccidula rufa* **11**(1): 11
- Coccinella 11-punctata* **4**(2): 35
- Coccinella 5-punctata* **8**(1): 12
- Coccinella 7-punctata* **12**(2): 38,39; **16**(1): 19; **17**(1): 34; **19**(2): 44
- Coccinella hieroglyphica* **13**(2): 7
- Coccinella magnifica* **16**(1): 18; **19**(2): 56
- Coccinella septempunctata* **12**(2): 39
- Coelostoma orbiculare* **17**(2): 30
- Colymbetes fuscus* **17**(2): 29,30
- Coryphium angusticolle* **18**(1): 19
- Crypticus quisquilius* **17**(2): 43
- Cryptocephalus aureolus* **14**(1): 12
- Cryptocephalus bipunctatus* **16**(1): 21
- Cryptocephalus labiatus* **16**(1): 20
- Cryptocephalus moraei* **16**(1): 20
- Cryptorhynchus lapathi* **14**(1): 12
- Cteniopus sulphureus* **5**(2): 37; **6**(2): 35; **16**(1): 9
- Cylindronotus pallidus* **17**(1): 11; **17**(2): 42,43
- Cyphon konsbergensis* **19**(1): 9
- Dacne bipustulata* **15**(1): 16
- Dacne rufifrons* **15**(1): 16
- Dascillus cervinus* **16**(1): 21
- Denticollis linearis* **11**(1): 22
- Diacanthous undulata* **19**(1): 9
- Dinaraea aequata* **11**(1): 22
- Dinarda markeli* **19**(2): 56
- Donacia aquatica* **10**(2): 30; **14**(1): 12
- Donacia crassipes* **17**(2): 29,30
- Dromius quadrimaculatus* **16**(1): 19
- Dryocoetinus villosus* **11**(1): 23
- Dyschirius nitidus* **19**(1): 8
- Dysticus marginatus* **17**(2): 29,30
- Dysticus* sp. **6**(2): 26
- Elaphrus riaprius* **8**(1): 16
- Ellescus bipunctatus* **14**(1): 12
- Encephalus complicans* **18**(1): 21
- Enicmus fungicola* **15**(1): 17
- Enicmus rugosus* **14**(1): 10; **15**(1): 17; **18**(1): 23
- Enochrus coarctatus* **17**(2): 29,30
- Epitrix pubescens* **16**(1): 8
- Erichsonius cinerascens* **18**(1): 22
- Euophyrum confine* **16**(1): 20; **18**(1): 24
- Euplectus signatus* **18**(1): 22
- Eupletus sanguineus* **18**(1): 22
- Exochomus 4-pustulatus* **19**(2): 34,35

- Fleutiauxialleus maritimus* **7**(2): 13; **8**(1): 16,19
- Furcipes rectirostris* **3**(2): 31
- Gabrius bishopi* **8**(1): 16,18
- Gabrius piliger* **15**(1): 16
- Gabrius splendidulus* **11**(1): 22
- Galeruca tanacetii* **17**(1):15
- Gastrophysa viridula* **4**(1): 14-15; **6**(2): 47; **7**(1): 8,9,12; **7**(2): 13; **11**(2): 29
- Georissus crenulatus* **8**(1): 16,18
- Geotrupes stercorarius* **17**(1): 13
- Glischrochilus quadripunctatus* **18**(1): 23
- Grammoptera ruficornis* **11**(1): 23
- Grapdoytes pictus* **17**(2): 30
- Gymnetron beccabungae* **19**(1): 9
- Habroceris capillaricornis* **18**(1): 20
- Hadrognathus brevipalpis* **17**(1): 13
- Hadrognathus longipalpus* **18**(1): 19
- Halipilus apicalis* **14**(1): 11
- Halipilus lineatocollis* **17**(2): 30
- Halipilus ruficollis* agg. **17**(2): 30
- Halyzia 16-guttata* **16**(1): 19
- Halyzia conglobata* **5**(1): 7
- Helophorus* sp. **17**(1): 29
- Helophorus arvenicus* **8**(1): 16,18; **18**(1): 18
- Helophorus brevipalpis* **17**(2): 29,30
- Helophorus grandis* **17**(2): 29,30
- Helophorus minutus* **17**(2): 29,30
- Heterothops dissimilis* **18**(1): 22
- Heterothops minutus* **18**(1): 22
- Heterthops praeivius* **18**(1): 22
- Hippodamia variegata* **14**(1): 11
- Hister neglectus* **18**(1): 19
- Hoplia philanthus* **16**(1): 19
- Hydnobius punctatus* **17**(1): 10-11
- Hydraena rufipes* **8**(1): 16,18
- Hydrobius fuscipes* **17**(2): 30
- Hydroglyphus geminus* **18**(1): 18
- Hydroporus erythrocephalus* **17**(2): 30
- Hydroporus gyllenhali* **17**(2): 30
- Hydroporus memnonius* **17**(2): 30
- Hydroporus palustris* **17**(2): 30
- Hydroporus planus* **17**(2): 30
- Hydroporus rufifrons* **10**(2): 30
- Hydroporus striola* **17**(2): 30
- Hydroporus tristis* **17**(2): 30
- Hydrosmecta thinoboides* **8**(1): 16,19
- Hydrothassa marginella* **2**(1): 3
- Hygrotus impressopunctatus* **17**(2): 29,30
- Hygrotus inaequalis* **17**(2): 30
- Hylastinus obscurus* **15**(1): 15
- Hylocoetus dermestoides* **19**(1): 9
- Hyphydrus ovatus* **17**(2): 29,30

- Hydroporus palustris* **17**(2): 30
Ilybius ater **17**(2): 29,30
Ilybius fuliginosus **17**(2): 30
Ilybius montanus **17**(2): 30
Ilybius quadriguttatus **17**(2): 30
Ips acuminatus **18**(1): 24
Judolia cerambyciformis **20**(2): 35
Lampyris noctiluca **4**(2): 29; **13**(1): 3; **17**(2): 26; **18**(2): 27
Lathrobium angusticolle **8**(1): 16,18
Lathrobium ripicola **8**(1): 16,18
Leiodes ciliaris **7**(1): 6
Leiodes furva **7**(1): 6
Leiopus nebulosus **16**(1): 21
Leistus rufomarginatus **6**(2): 33-34; **7**(1): 6
Lema puncticollis **18**(1): 24
Leptacinus formicetorum **19**(2): 55,56
Leptinus testaceus **13**(1): 6-7
Leptura quadrifasciata **11**(2): 34
Leptusa fumida **11**(1): 22
Leptusa pulchella **18**(1): 20
Leptusa ruficollis **11**(1): 22
Limnebius truncatellus **17**(2): 30
Limnius volckmari **8**(1): 16
Limobius borealis **3**(1): 5
Liocytusa minuta **19**(1): 8
Lochmaea caprea **17**(2): 33
Lomechusa sp. **19**(2): 55
Luperus flavipes **16**(1): 19
Lyprocorrhe anceps **19**(2): 56
Magdalis carbonaria **14**(1): 12
Magdalis ruficornis **15**(1): 15
Malachius bipustulatus **5**(1): 9-10, **5**(2): 29
Malthodes flavoguttatus **11**(1): 22
Malthodes marginatus **16**(1): 19
Mecinus pascuorum **16**(1): 8
Medon brunneus **18**(1): 21
Melandrya caraboides **14**(1): 11
Melanimon tibialis **17**(2): 42
Melanotus villosus **11**(1): 22
Meloe violaceus **11**(1): 5; **14**(1): 12; **17**(1): 14
Melolontha melolontha **4**(2): 29; **16**(1): 19; **18**(2): 29
Micralymma marina **3**(1): 5
Microscydmus nanus **17**(1): 13
Miscodera arctica **19**(1): 8
Monotoma angusticollis **19**(2): 56
Monotoma concicollis **19**(2): 56
Monotoma sp. **19**(2): 56
Mycetaea hirta **18**(1): 23
Mycetophagus atomarius **11**(1): 22
Mycetoporus punctus **18**(1): 20

- Myrmedonia* sp. **19**(2): 55
Myrrha octodecimguttata **5**(2): 42; **12**(2): 39
Myzia oblongoguttata **5**(2): 42; **12**(2): 39;
13(2): 7
Necrobia violacea **18**(1): 22
Negastrius sabulicola **8**(1): 16,19
Neobisnius prolixus **8**(1): 16,18
Neobisnius lathrobioides **7**(2): 13
Neobisnius prolixus **7**(2): 13; **8**(1): 16,18
Notothecta flavipes **19**(2): 55,56
Nudobius lentus **15**(1): 15
Octhebius marinus **14**(1): 11
Octhebius minimus **17**(2): 30
Ocyopus nitens **19**(1): 8
Ocyopus olens **13**(2): 7; **19**(1): 8
Oedemera femoralis **15**(1): 12
Oiceoptoma thoracicum **16**(2): 38
Oligota parva **18**(1): 21
Oligota punctulata **18**(1): 21
Oncomera femoralis **15**(1): 12
Oncomera femorata **15**(1): 12
Oncomera femoratum **14**(1): 11
Opatrum sabulosum **17**(2): 43; **19**(1): 9
Orchesia undulata **11**(1): 22
Othius myrmecophilus **19**(2): 55,56
Otiorhynchus nodosa **4**(1): 10
Otiorhynchus rugifrons **3**(1): 5
Oulema melanopus **9**(2): 28
Oulema rufocyanea **9**(2): 28
Oxypoda annularis **18**(1): 21
Oxypoda formiceticola **19**(2): 56
Oxypoda haemorrhoea **19**(2): 55
Oxypoda nigricornis **18**(1): 21
Oxypoda tirolensis **18**(1): 21
Oxypoda sp. **19**(2): 56
Paraphostistus impressus **12**(1): 5; **14**(1): 11
Phaleria cadaverina **17**(2): 42; **18**(1): 23
Philonthus atratus **18**(1): 22
Philonthus fumarius **14**(1): 10; **15**(1): 16
Philonthus rectangulus **15**(1): 11
Philonthus rubripennis **8**(1): 16
Philonthus umbratilis **15**(1): 11
Philonthus sp. **15**(1): 11
Phloeonomus punctipennis **11**(1): 22
Phylan gibbus **17**(2): 42
Phyllobius pyri **16**(1): 21
Phyllobius roboretanus **16**(1): 19
Phylopertha horticola **5**(2): 27; **16**(1): 19
Placusa depressa **18**(1): 21
Pogonocherus hispidulus **16**(1): 21
Polydrusus cervinus **16**(1): 21
Polydrusus mollis **14**(1): 12

- Propylea 14-punctata* **14**(1): 10; **16**(1): 19;
19(2): 44
- Propylea quatturdecimpunctata* **4**(2): 36-37;
5(1): 7; **12**(2): 39
- Proteinus laevigatus* **18**(1): 19
- Psylliodes chrysocephala* **18**(1): 23
- Psyllobora vigintiduopunctata* **12**(2): 39
- Pterostichus rhaeticus* **5**(1): 8
- Ptinella cavelli* **18**(1): 19
- Ptinella errabunda* **18**(1): 19
- Pyrochora coccinea* **11**(1): 18,22; **14**(1): 11;
16(1): 19
- Pyrochora serraticornis* **16**(1): 19
- Quedius brevis* **19**(2): 56
- Quedius maurus* **11**(1): 22
- Quedius plagiatus* **11**(1): 22
- Quedius* sp. **15**(1): 11
- Rabocerus gabrieli* **15**(1): 17
- Rhagium bifasciatum* **2**(1): 3; **5**(2): 27; **11**(1):
23,24; **18**(2): 32
- Rhagium mordax* **11**(1): 23; **16**(1): 19
- Rhagonycha fulva* **4**(2): 30; **16**(1): 20; **18**(2): 36
- Rhagonycha limbata* **16**(1): 21
- Rhamphus oxyacanthae* **6**(1): 17
- Rhamphus pulicarius* **6**(1): 17-20
- Rhizophagus dispar* **11**(1): 22
- Rhizophagus nitidulus* **7**(1): 6; **11**(1): 18,22
- Rhynchaenus alni* **6**(1): 17
- Rhynchites cupreus* **14**(1): 12
- Ruptela maculata* **11**(1): 18,23; **20**(2): 35
- Saperda scalaris* **13**(2): 2,3
- Scaphidium quadrimaculatum* **11**(1): 22
- Scolytus destructor* **11**(1): 12
- Scolytus ratzeburgi* **11**(1): 12-13; **11**(2): 45-46
- Scolytus scolytus* **11**(1): 12
- Scymnus auritus* **16**(1): 6
- Scymnus femoralis* **16**(1): 6
- Scymnus frontalis* **15**(1): 13; **16**(1): 6
- Scymnus haemorrhoidalis* **16**(1): 6
- Scymnus limbatus* **16**(1): 6
- Scymnus nigrinus* **16**(1): 6
- Scymnus redenbacheri* **16**(1): 6
- Scymnus schmidti* **15**(1): 13-14; **16**(1): 5-6
- Scymnus suturalis* **15**(1): 15; **16**(1): 6
- Scymnus* sp. **15**(1): 14
- Sericoderus lateralis* **18**(1): 23
- Soronia punctatissima* **11**(2): 44-45
- Staphylinus (Tasgius) winkleri* **18**(1): 22
- Staphylinus globulifer* **18**(1): 22
- Staphylinus melanarius* **18**(1): 22
- Stenichnus godarti* **19**(2): 56
- Stenus bifoveolatus* **11**(1): 10
- Stenus binotatus* **10**(2): 30
- Stenus canaliculatus* **11**(1): 10

- Stenus fossulatus* **8**(1): 16,18; **9**(2): 29-30
- Stenus guttula* **8**(1): 16; **9**(2): 29
- Stenus latifrons* **8**(1): 16
- Stenus nitidiusculus* **11**(1): 11
- Stenus ochropus* **18**(1): 21
- Stenus oscillator* **7**(1): 6; **8**(1): 16,18
- Stenus pallitarsis* **11**(1): 11
- Stenus picipenis* **11**(1): 11
- Stenus pubescens* **11**(1): 11
- Stenus tarsalis* **8**(1): 16, **12**(1): 5
- Stenus umbratilis* **15**(1): 16
- Strangalia maculata* **16**(1): 21
- Strangalia quadrifasciata* **11**(1): 19,23,24
- Subcoccinella vigintiquatturopunctata* **12**(2): 38,39
- Sunius propinquus* **18**(1): 21,22
- Synaptus filiformis* **12**(1): 5
- Tachyporus solutus* **2**(1): 3
- Tanymecus palliatus* **12**(1): 5
- Telematophilus caricis* **10**(2): 30
- Telematophilus typhae* **10**(2): 30; **11**(1): 10-11; **14**(1): 10
- Thanassimus formicarius* **11**(1): 22
- Thiasophilus angulata* **19**(2): 56
- Thinobius newberyi* **8**(1): 12
- Thymalus limbatus* **15**(1): 16; **19**(1): 9
- Trachodes hispidus* **12**(1): 5
- Trechus rubens* **7**(2): 13; **8**(1): 15,16
- Trichiusa immigrata* **15**(1): 15
- Triplax aenea* **11**(1): 22
- Tritoma bipustulata* **11**(1): 18,22
- Tropiphorus terricola* **8**(1): 16,19
- Trypodendron signatum* **15**(1): 17; **18**(1): 24
- Zoroachros minimus* **8**(1): 16

Index of Contributors

Atty, D

6(2):33,35; 7(1):6; 10(2):30; 11(1):17; 12(2):49; 13(1):6; 14(1):9; 15(1):14; 15; 18(1):18; 19(2):55

Birkett, N

5(1):7

Clarke, D

18(2):32

Fakes, W

4(1):13

Hewitt, S

4(2):36; 7(2):13; 11(1):12; 11(2):44,45; 17(2):29; 18(2):29,30; 19(1):7

Hewitt, S. M

5(1):9; 5(2):37; 11(1):17; 18(2):35

Iveson, D

10(2):20

Marrs, B

2(1):3

Mawby, F

11(2):33,34

Naylor, G

4(2):36; 5(2):27; 11(1):5; 13(1):3; 13(2):3; 15(1):3; 18(2):27; 19(2):34,44

Parker, J

11(1):17

Read, J

6(2):33; 9(2):29; 14(1):11; 19(1):7

Read, R. W. J

3(1):5,6,9; 3(2):31; 4(1):9,10; 5(1):8; 6(1):17; 9(2):28; 11(1):10; 12(1):5; 13(1):7; 15(2):29; 16(1):5; 16(1):8; 17(1):12; 20(1):5

Roberts, J

20(2):35

Saag, M

11(2):29; 15(2):24

Thomas, J

15(1):12,13; 16(1):18; 17(1):10; 17(2):42

Acknowledgements

I wish to thank Deborah Muscat for her kind assistance with the preparation of this index.

Cumbria Biodiversity Data Centre collects, collates, manages and disseminates information relating to the biodiversity and geodiversity of the county on a not for profit basis, enabling others to better understand, protect and foster the natural environment of the region.

Email@ info@cbdc.org.uk **Post:** Tullie House Museum, Castle Street, Carlisle, CA3 8TP **Web:** cbdc.org.uk

CBDC - OP – 10:1 (December 2024)

© Cumbria Biodiversity Data Centre