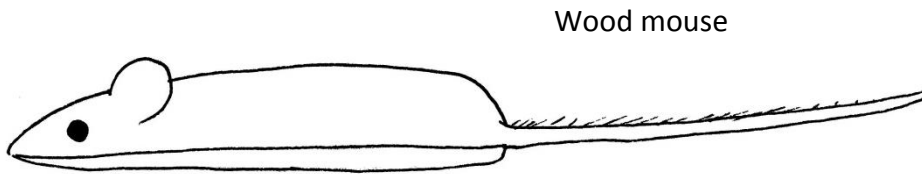


## How to Identify a House Mouse

The table and diagrams below show the main differences between 'mouse-sized' mammals. They will hopefully help you distinguish between them. However, if you are able to take a few photographs of the animal in question and send them to us, we should hopefully be able to identify it. Good luck!



*Modified from Sargent, G. & P. Morris (1999). How to Find and Identify Mammals. London, The Mammal Society.*

Identification feature	House mouse	Wood mouse	Field vole & Bank vole	Common shrew
<b>Fur colour</b>	Grey-brown fur all over	Reddish brown fur on back. White on underside. Yellow patch on chest between forelegs	Field vole has grey-brown fur on back. Bank vole has red-brown fur on back	Dark brown fur on back changing gradually to very pale brown beneath
<b>Tail</b>	Almost hairless tail, roughly as long as the animal's body	Tail with black hair on top. Tail about as long as the animal's body	Short tail. Half the length of body or shorter. Covered in hairs	A few hairs mainly on underside of tail
<b>Ears</b>	Large (12-15mm) and easily visible	Large (15-17mm) and easily visible	Small. Might be easy or hard to see	Very small
<b>Eyes</b>	Large	Large	Small	Very small
<b>Face</b>	Pointed face	Pointed face	Blunt face	Very pointed face
<b>Other features</b>	Greasy fur. Mousey smell	Fur is not greasy		